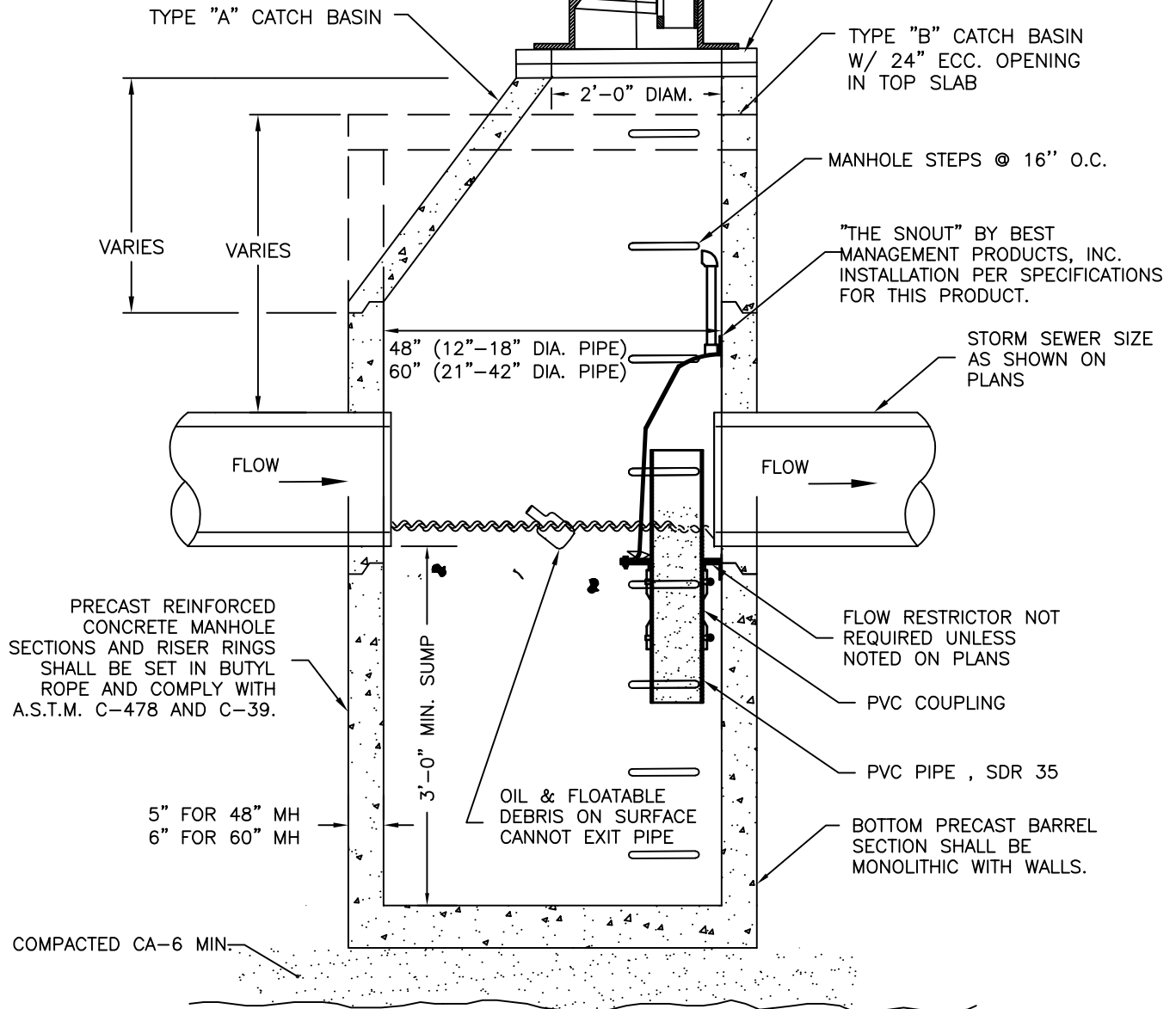


EAST JORDAN #1020 FRAME AND SOLID LID WITH CONCEALED PICKHOLES AND WATERTIGHT GASKET. LID SHALL HAVE THE WORDS 'CITY OF BATAVIA', 'STORM' (SEE STORM MANHOLE LID DETAIL). CASTINGS FOR CURB INLETS AND CATCH BASINS IN THE CURB LINE SHALL BE E.J. #7220 UNLESS LOCATED IN DEPRESSED CURB (SEE NOTE #4) OR AS OTHERWISE NOTED ON PLANS.

PRECAST CONCRETE RINGS 8" MAX. WITH BITUMINOUS MASTIC BED FOR EACH RING AND CASTING.



**NOTES:**

1. MANHOLE SECTION JOINTS TO BE TONGUE AND GROOVED. NON-PRECAST PIPE OPENINGS SHALL BE CORED AND RUBBER BOOTED. MORTAR ALL PIPE PENETRATIONS INSIDE AND OUTSIDE OF STRUCTURE.
2. PRIOR TO THE PLACEMENT OF OF FINAL LAYER OF ROADWAY, FRAMES AND AND ADJUSTING RINGS SHALL BE SET IN IDOT CLASS "SI" CONCRETE MIXTURE.
3. ALL CATCH BASIN GRIT OIL STOP STRUCTURES MUST BE LOCATED IN THE PARKWAY OR CURB LINE ACCESSIBLE BY CLEANING EQUIPMENT. GENERALLY OIL STOP STRUCTURES SHOULD NOT BE USED FOR SEWERS EXCEEDING 18-IN DIAM (OR AS APPROVED BY CITY ENGINEER). THE CATCH BASIN GRIT OIL STOP SHALL BE USED AT THE DOWNSTREAM SIDE OF ANY TWO DRAINAGE STRUCTURES.
4. CURB INLET FRAMES IN DEPRESSED CURB LOCATIONS SHALL BE EJ #7000 WITH TY 'M3' GRATE.



**CITY OF BATAVIA  
PUBLIC WORKS DEPARTMENT**

SHEET: 1 OF 1  
DATE: 6/8/22

**CATCH BASIN - TYPE "A" OR TYPE "B"**

**STANDARD NO. 4.06**