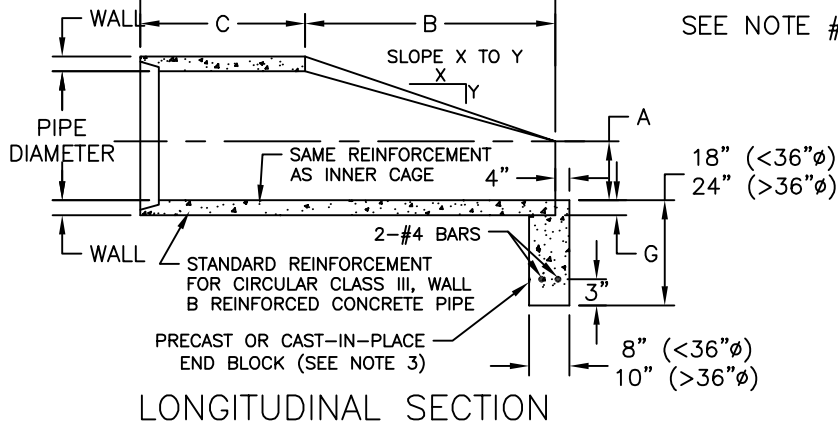
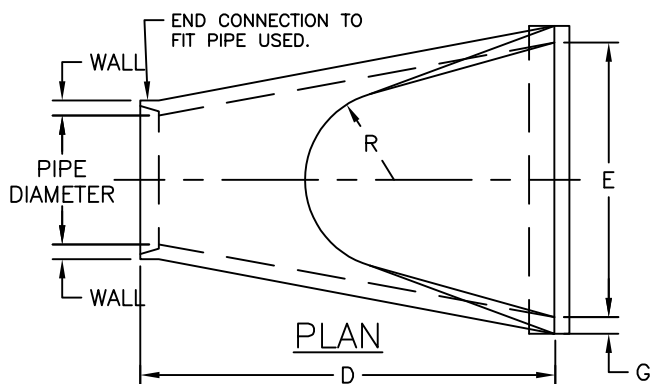
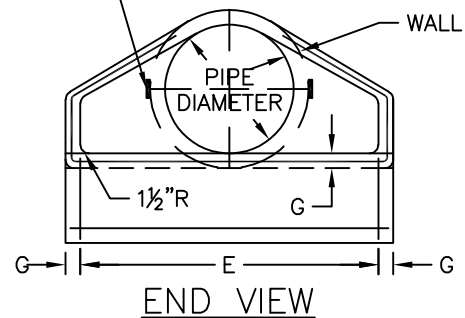


PIPE DIA.	APPROX. WT.(lbs)	WALL	A	B	C	D	E	G	R	SLOPE
12"	530	2"	4"	2'-0"	4'-0 <sup>7</sup> / <sub>8</sub> "	6'-0 <sup>7</sup> / <sub>8</sub> "	2'-0"	2"	9"	3:1
15"	740	2 <sup>1</sup> / <sub>4</sub> "	6"	2'-3"	3'-10"	6'-1"	2'-6"	2 <sup>1</sup> / <sub>4</sub> "	11"	3:1
18"	990	2 <sup>1</sup> / <sub>2</sub> "	9"	2'-3"	3'-10"	6'-1"	3'-0"	2 <sup>1</sup> / <sub>2</sub> "	12"	3:1
21"	1280	2 <sup>3</sup> / <sub>4</sub> "	9"	2'-11"	3'-2"	6'-1"	3'-6"	2 <sup>3</sup> / <sub>4</sub> "	13"	3:1
24"	1520	3"	9 <sup>1</sup> / <sub>2</sub> "	3'-7 <sup>1</sup> / <sub>2</sub> "	2'-6"	6'-1 <sup>1</sup> / <sub>2</sub> "	4'-0"	3"	14"	3:1
27"	1930	3 <sup>1</sup> / <sub>4</sub> "	10 <sup>1</sup> / <sub>2</sub> "	4'-0"	2'-1 <sup>1</sup> / <sub>2</sub> "	6'-1 <sup>1</sup> / <sub>2</sub> "	4'-6"	3 <sup>1</sup> / <sub>4</sub> "	14 <sup>1</sup> / <sub>2</sub> "	3:1
30"	2190	3 <sup>1</sup> / <sub>2</sub> "	12"	4'-6"	1'-7 <sup>3</sup> / <sub>4</sub> "	6'-1 <sup>3</sup> / <sub>4</sub> "	5'-0"	3 <sup>1</sup> / <sub>2</sub> "	15"	3:1
33"	3200	3 <sup>3</sup> / <sub>4</sub> "	13 <sup>1</sup> / <sub>2</sub> "	4'-10 <sup>1</sup> / <sub>2</sub> "	3'-3 <sup>1</sup> / <sub>4</sub> "	8'-1 <sup>3</sup> / <sub>4</sub> "	5'-6"	3 <sup>3</sup> / <sub>4</sub> "	17 <sup>1</sup> / <sub>2</sub> "	3:1
36"	4100	4"	15"	5'-3"	2'-10 <sup>3</sup> / <sub>4</sub> "	8'-1 <sup>3</sup> / <sub>4</sub> "	6'-0"	4"	20"	3:1
42"	5380	4 <sup>1</sup> / <sub>2</sub> "	1'-9"	5'-3"	2'-11"	8'-2"	6'-6"	4 <sup>1</sup> / <sub>2</sub> "	22"	3:1
48"	6550	5"	2'-0"	6'-0"	2'-2"	8'-2"	7'-0"	5"	22"	3:1
54"	8240	5 <sup>1</sup> / <sub>2</sub> "	2'-3"	5'-5"	2'-11"	8'-4"	7'-6"	5 <sup>1</sup> / <sub>2</sub> "	24"	2.4:1
60"	8730	6"	2'-11"	5'-0"	3'-3"	8'-3"	8'-0"	5"	*	2:1
66"	10710	6 <sup>1</sup> / <sub>2</sub> "	2'-6"	6'-0"	2'-3"	8'-3"	8'-6"	5 <sup>1</sup> / <sub>2</sub> "	*	2:1
72"	12520	7"	3'-0"	6'-6"	1'-9"	8'-3"	9'-0"	6"	*	1.86:1
78"	14770	7 <sup>1</sup> / <sub>2</sub> "	3'-0"	7'-6"	1'-9"	9'-3"	9'-6"	6 <sup>1</sup> / <sub>2</sub> "	*	1.82:1
84"	18160	8"	3'-0"	7'-6 <sup>1</sup> / <sub>2</sub> "	1'-9"	9'-3 <sup>1</sup> / <sub>2</sub> "	10'-0"	6 <sup>1</sup> / <sub>2</sub> "	*	1.5:1

\* RADIUS AS FURNISHED BY MANUFACTURER



SEE NOTE #5, TYP.



**NOTES:**

- TRASH GRATES REQUIRED ON ALL FLARED END SECTIONS.
- PRECAST CONCRETE FLARED END SECTIONS SHALL CONFORM TO APPLICABLE REQUIREMENTS OF AASHTO M-170 CLASS III, WALL B REINFORCED CONCRETE PIPE.
- PRECAST CONCRETE FLARED END SECTION FOR PIPE DIAMETER REQUIRED SHALL BE AS INDICATED ON DETAIL PLAN FOR EACH INDIVIDUAL INSTALLATION.
- THE END BLOCK SHALL BE PLACED PRIOR TO THE INSTALLATION OF THE FLARED END SECTION. THE END BLOCK SHALL BE BACKFILLED IN ACCORDANCE WITH ARTICLE 502.10 OF THE IDOT STANDARD SPECIFICATIONS (LATEST EDITION), COST INCIDENTAL TO END SECTION.
- FLARED END SECTION SHALL BE AFFIXED TO THE FIRST PIPE SECTION USING 2" X 2" X 1/4" THK. GALVANIZED STRAPS FASTENED TO THE PIPE WITH GALV. ANCHORS AND 5/8" BOLTS.



**CITY OF BATAVIA  
PUBLIC WORKS DEPARTMENT**

SHEET: 1 OF 1  
DATE: 1/1/16

**FLARED END SECTION A**

**STANDARD NO. 4.03**