

CITY OF BATAVIA

CONTROL MONUMENT DIAGRAM

STATION NAME: BATAVIA 105 DATE SET: 6-26-2006 OBSERVATION: 10-30-2017

MONUMENT TYPE: STAINLESS STEEL ROD IN SLEEVE

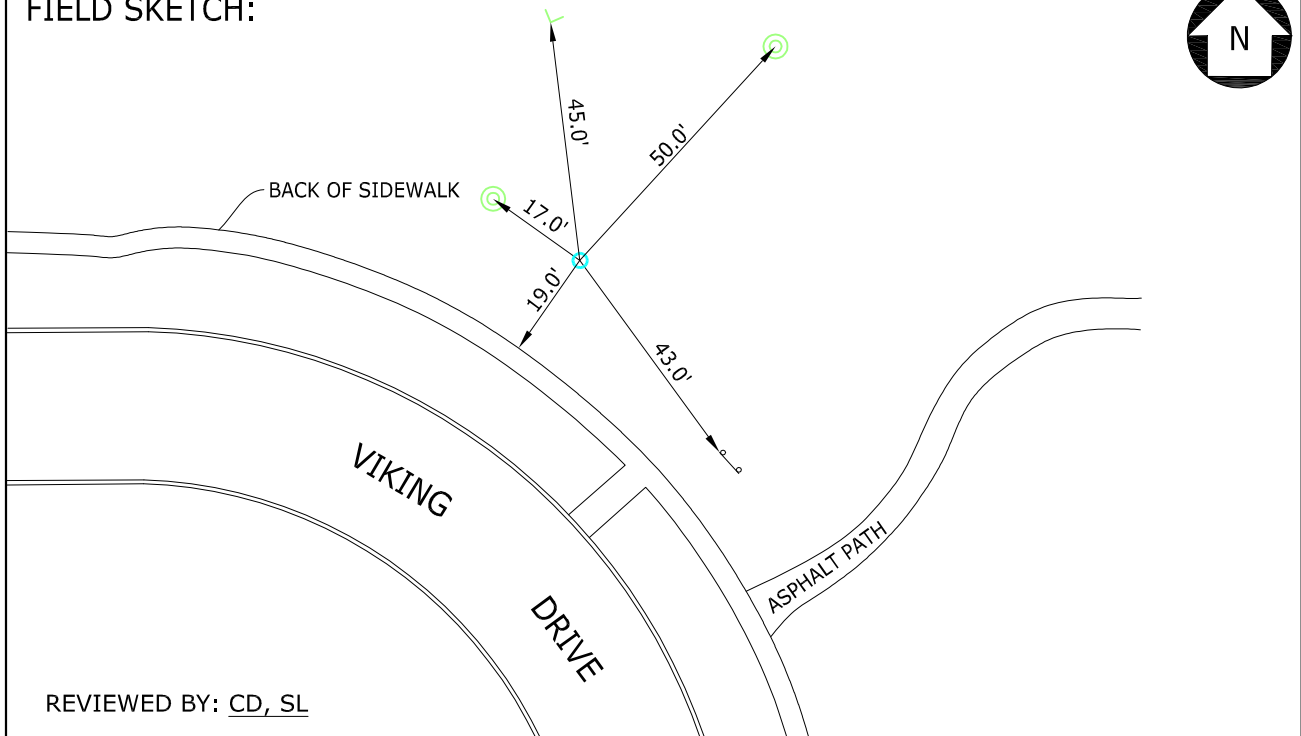
HORIZONTAL DATUM: NAD 83 (2011), IL EAST ZONE		US FEET	METERS	ACCURACY
LATITUDE: 41°50'50.68338"	NORTHING:	1886990.22	575155.770	NETWORK 0.54 CM
LONGITUDE: 88°17'19.92465"	EASTING:	996365.09	303692.686	

COMBINED SCALE FACTOR: 0.99994605

ORTHOMETRIC HEIGHT	FEET	METERS	DATUM	ACCURACY		
	717.82	218.791	NAVD88	2ND ORDER CLASS I		
ELLIPSOIDAL HEIGHT	FEET	METERS	GEOID HEIGHT	FEET	METERS	SOURCE
	609.09	185.652		-108.66	-33.121	GEOID 12B

STATION DESCRIPTION: ROD WITH DATUM POINT AND 6 INCH LID, 17.0 FT SE OF MANHOLE, 19.0 FT NE OF BACK OF SIDEWALK, 43.0 FT NW OF PARK SIGN POST, 45.0 FT S OF E CORNER OF 32 IN RCP/FES, 50.0 FT SW OF MANHOLE

FIELD SKETCH:



REVIEWED BY: CD, SL

S:\CITY_OF_BATAVIA\21707.088 BENCHMARK UPGRADE\15_SURVEY\15.4_DRAWING_DATA\BATAVIA 105 SET 6-26-2006.DWG

